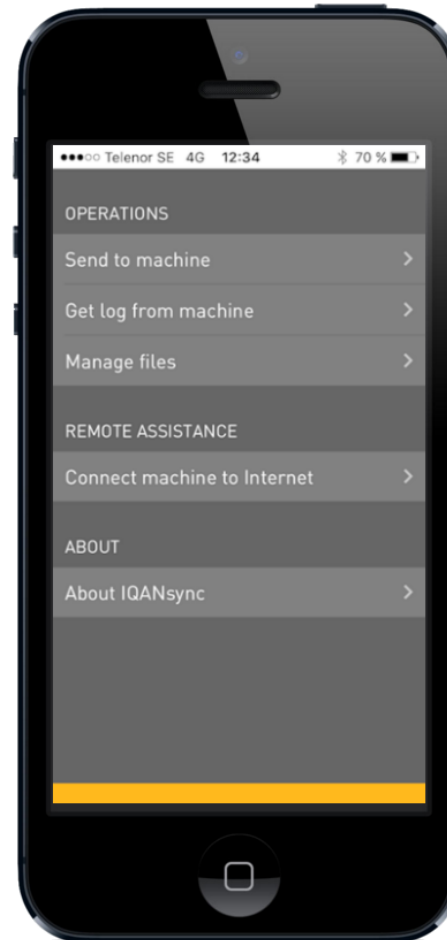


IQANsync and IQAN-G11

User manual



Publ no HY33-8416-UM/UK
Edition 2016-03-23



ENGINEERING YOUR SUCCESS.

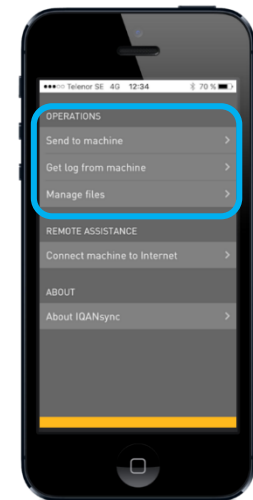
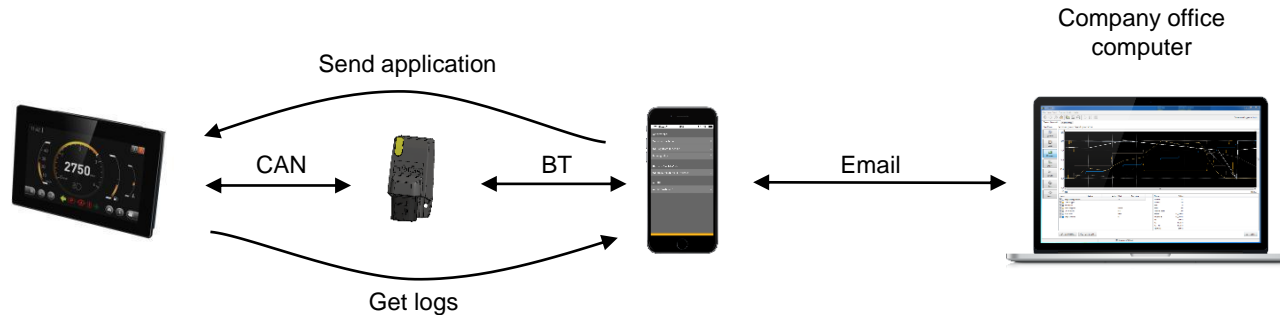
Description

IQANsync works in two different modes together with the IQAN-G11:

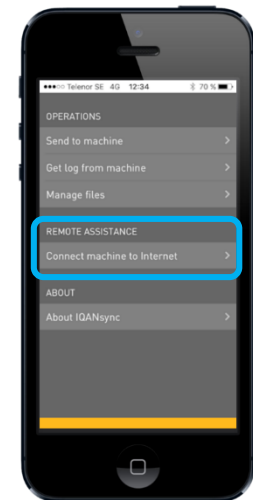
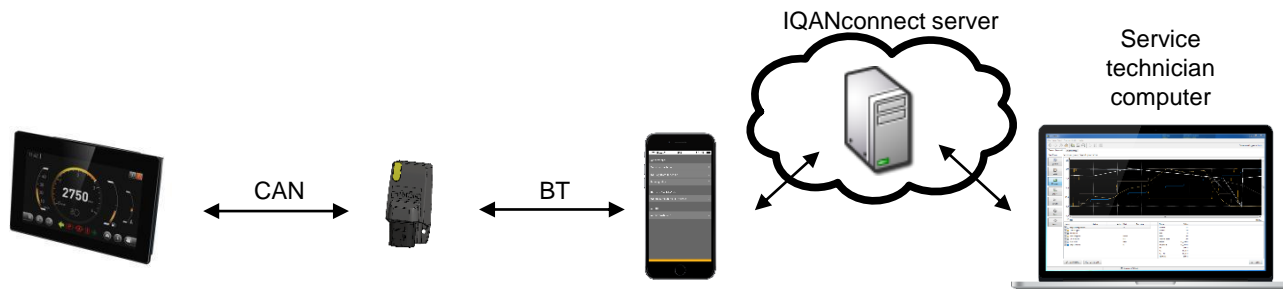
- **On site mode** – short range mode where IQANsync can act as a "memory card". The user can send files stored on the smart phone to the IQAN master unit via the IQAN-G11 module. The user can also download logs from the IQAN master to the phone and store on smart phone or forward files via email or store in dropbox folder
- **Remote assistance mode** – the IQANsync app together with the IQAN-G11 connects the machine to internet and makes the IQAN master available to remote support using the IQANconnect service

IQAN-G11 / IQANsync / IQANconnect

On site mode



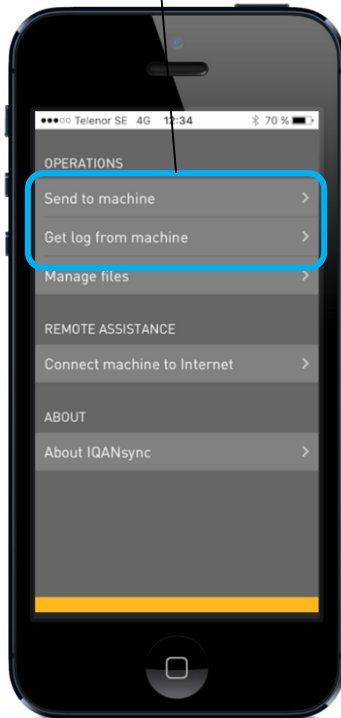
Remote assistance mode



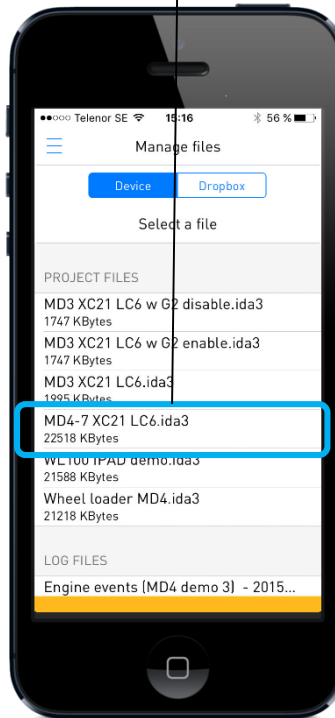
On site mode

Send and get operations

Start the IQANsync app and Select "Send to machine" or "Get log from machine"



Send to machine: Select the project, clone or settings file you want to send to machine



When the correct machine ID shows up, select it and tap "Connect"

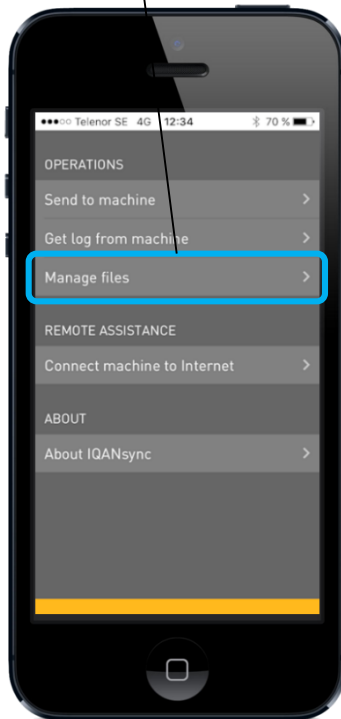


Get log from machine: Now select a log from the list that is shown

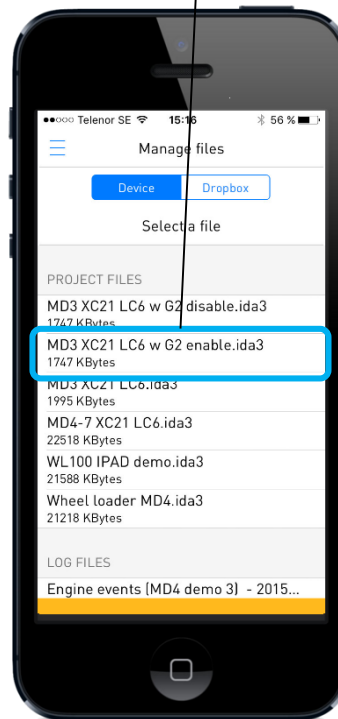
On site mode

Manage files

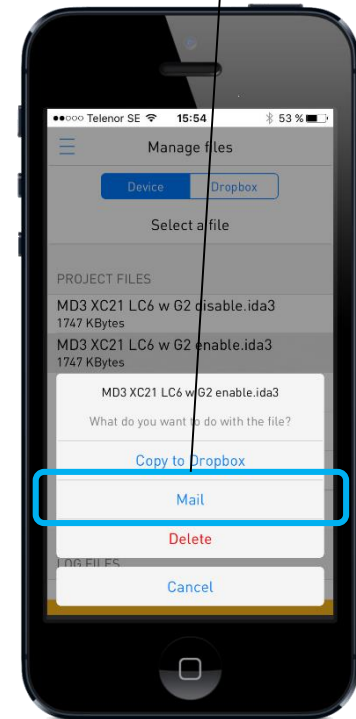
Start the IQANsync app and Select "Manage files"



Select the file you want to work with



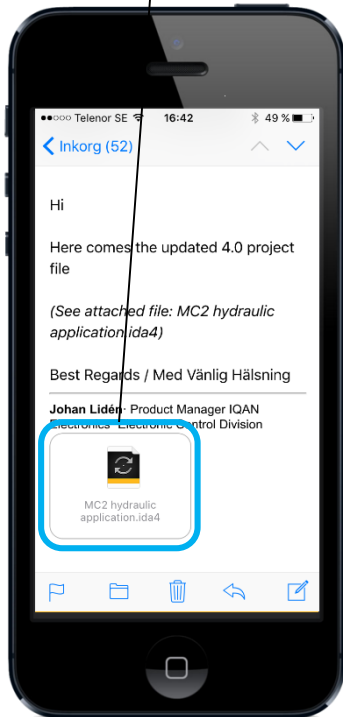
Select the desired operation



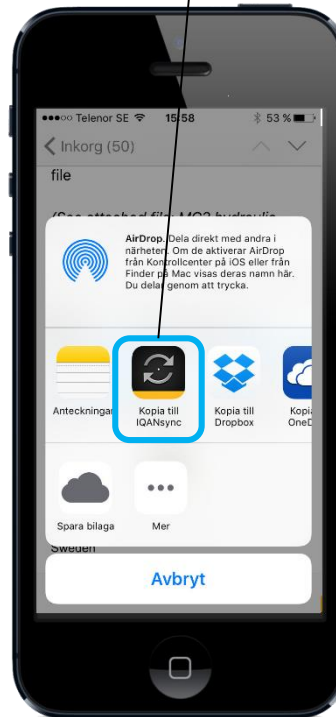
On site mode

Receiving project file via email

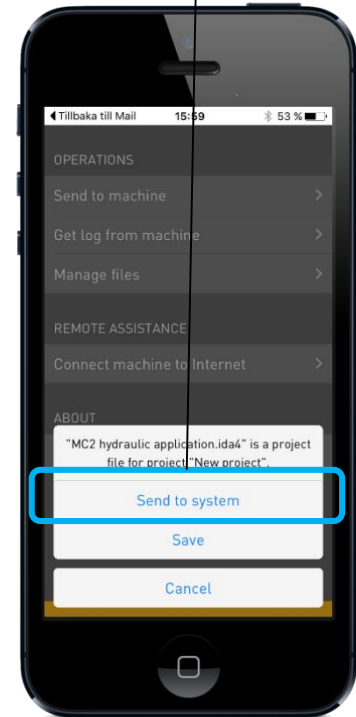
Click on the attached file in the Mail app



Select "Copy to IQANsync"



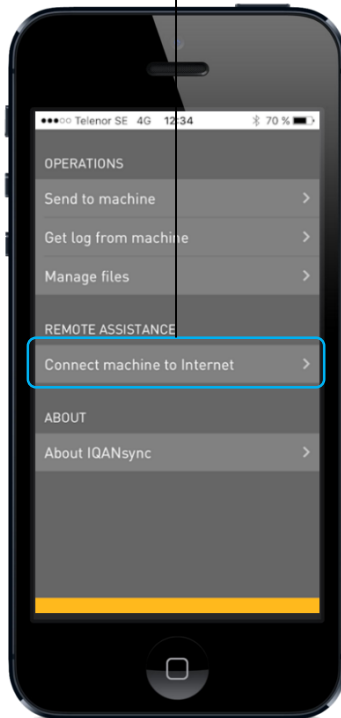
Select if file shall be sent to system straight away or saved to phone for later access



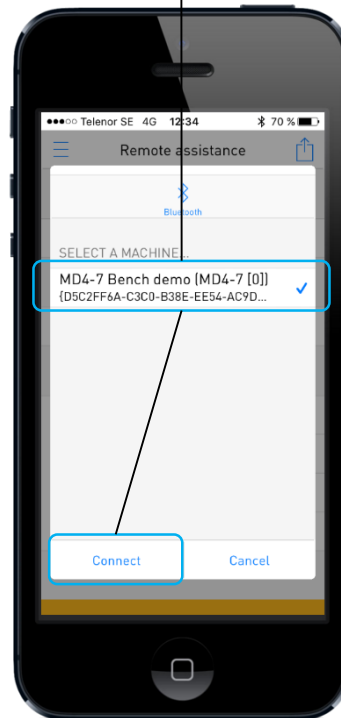
Remote assistance mode

Connect machine to Internet

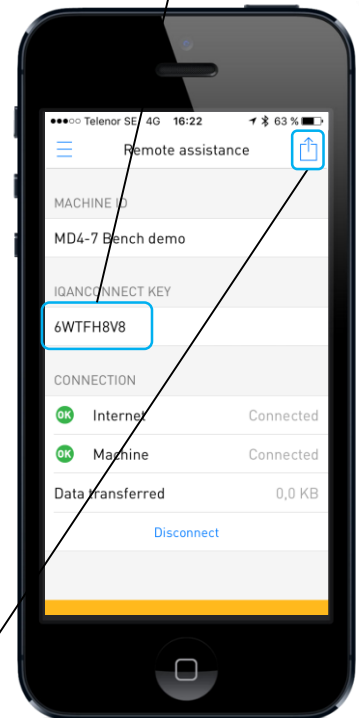
Start the IQANsync app and Select "Connect machine to Internet"



When the correct machine ID shows up, select it and tap "Connect"



The IQANconnect key is shown in the Remote assistance view



The IQANconnect key can be sent to another person by tapping this icon

Remote assistance mode

Connect via Internet from IQANrun

1. Click Communication and select "Connect via internet"

2. Select IQANconnect

3. If not already done, click and enter subscription key

4. Add IQANconnect key from IQANsync app

