



IQAN LM JOYSTICK REPLACEMENT SOLUTION

PLUG&PLAY KIT
REPL JOYSTICK PARKER IQAN LM



PLUG&PLAY KIT

REPL JOYSTICK PARKER IQAN LM

The SGI Group, in working with the Parker Hannifin engineering team, has developed a solution for replacing joysticks for the Parker IQAN LM family.

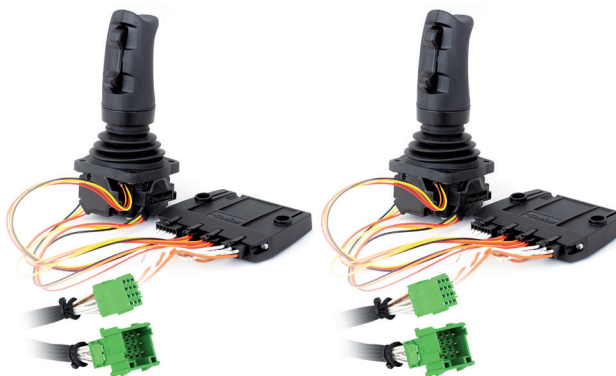
This is a Plug&Play substituting kit. In just a few minutes, your new joystick will be operating with 100% of the electronic functionality of the previous one. All you have to do is fit the components and connect with the characteristic green connectors.

The solution comes in two versions so you can choose the kit that best suits your needs.



0172942 PLUG&PLAY KIT

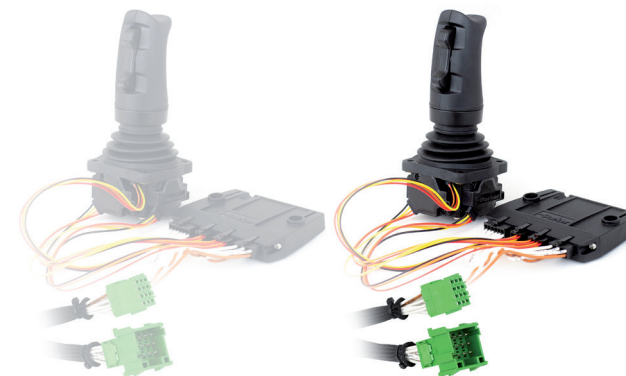
REPL 2 JOYSTICKS PARKER IQAN LM



- 2 Parker IQAN LC6-X05 joysticks.
- 2 Parker IQAN XC21 controllers.
- 1 Parker IQAN master controller with our simulation software.
- Plug&Play cables and connectors.

0172941 PLUG&PLAY KIT

REPL 1 JOYSTICK PARKER IQAN LM



- 1 Parker IQAN LC6-X05 joystick.
- 1 Parker IQAN XC21 controller.
- 1 Parker IQAN master controller with our simulation software.
- Plug&Play cables and connectors.
- Connection for a future second controller.



FORESTRY

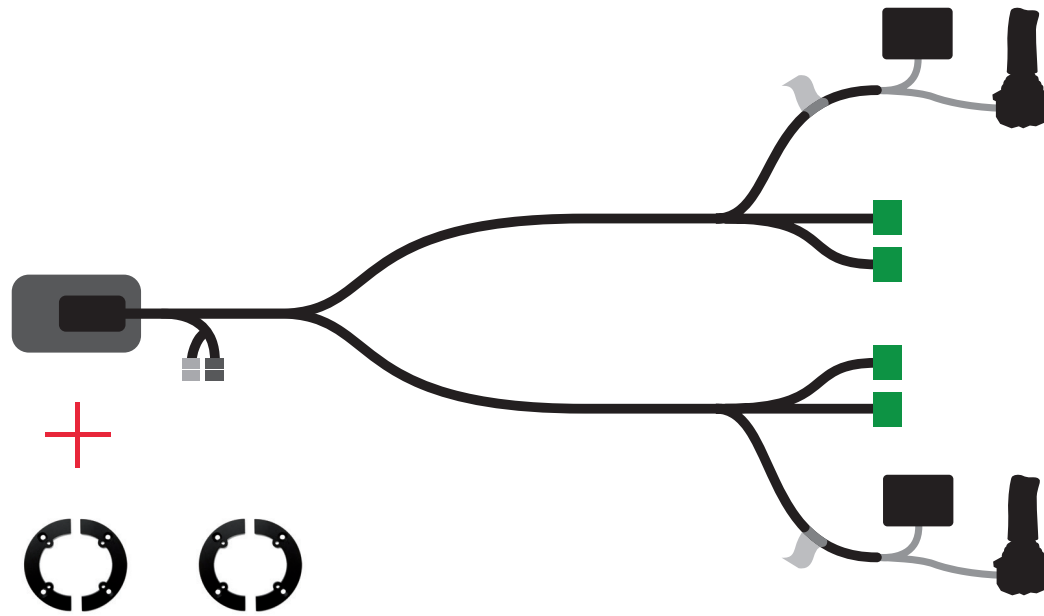


MARINE



AGRICULTURAL

CABLING DIAGRAM



The kit includes mechanical adapters to keep the replacement joysticks in place.

ADVANTAGES OF THE SGI GROUP PLUG&PLAY KIT

POINT 1

Replaces the electricians, electronics and mechanics. Plug&Play, easy to install.

POINT 2

Electronic equipment in the Parker IQAN family.

POINT 3

IQAN LC6 - X05 joystick with Hall effect technology. Improved precision and sensitivity in movements.

POINT 4

Adapted mechanical supports.

POINT 5

Modular solution. A second joystick can be added with the same installation.

Functionality is 100% compatible with the following Parker PNs:

20005964 - IQAN-LM-3D

20075966 - IQAN LM-3D-A04

20005962 - IQAN-LL-3G



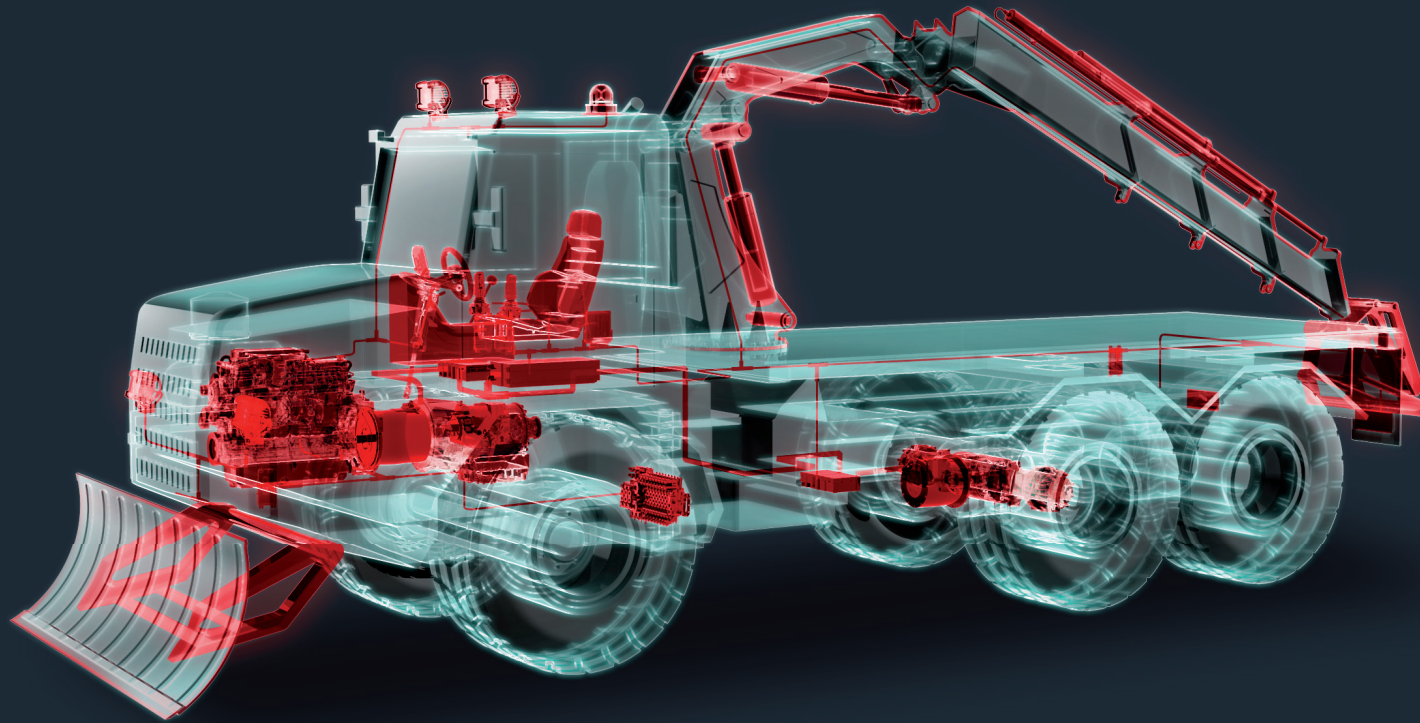
PUBLIC WORKS



MILITARY



URBAN WASTE



HYDRAULICS



MULTIPLEXED



e-MOBILITY



WIRING



ELECTROMECHANICS



ENGINES

www.sgingenieria.es

SGI
group**

DISTRIBUTED BY:

