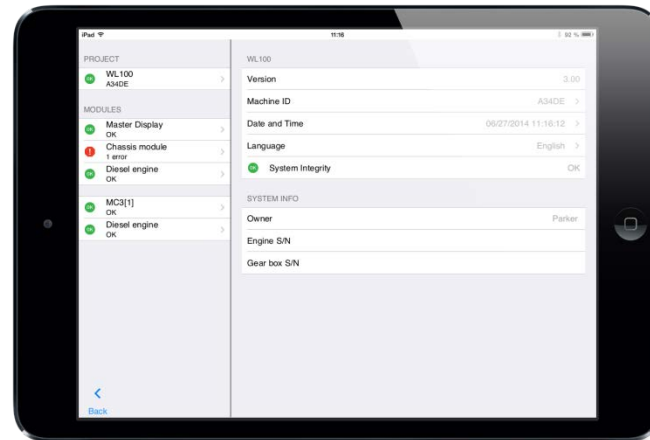


IQANrun 3 Free for tablets

Product presentation



What is IQANrun?

- IQANrun is the aftermarket tool in the IQAN SW studios.
- Used to support IQAN hardware out in the field as well as during product development.
- IQANrun is a user friendly, intuitive tool with all the needed functionalities you can expect from an aftermarket tool. You can:
 - View and adjust inputs, outputs and parameters
 - View and adjust settings, save and restore to factory default values
 - Online measuring of machine functions, graphical and text.
 - Login to machine for full or limited access.
 - View application
 - Update software and take a backup clone of the machine.

IQANrun 3 Free overview

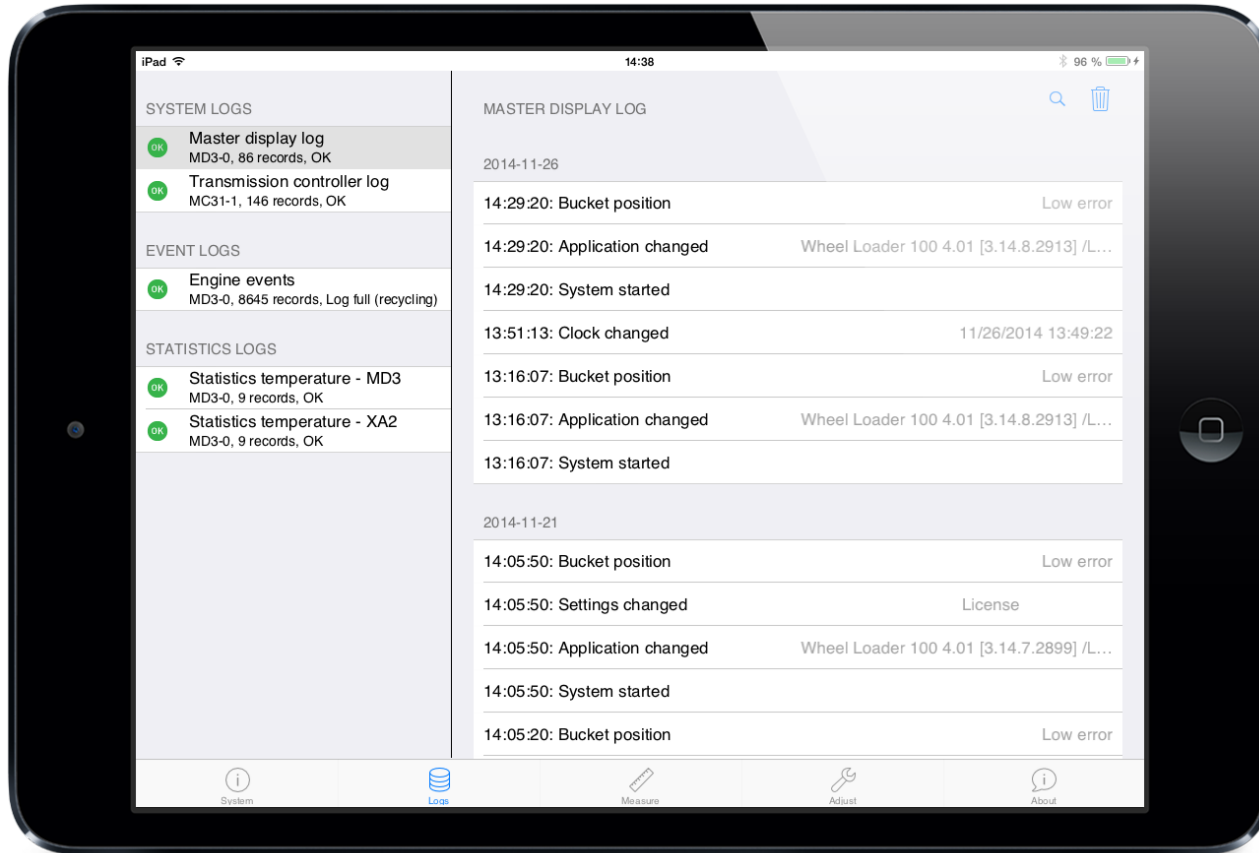
- Extension to mobile devices of the current IQANrun
- Increases the availability for users
 - easier to bring tablet vs. PC
- With mobile device it is possible to reach functions like
 - System overview
 - Logs
 - Measure
 - Adjust
- Current limitations:
 - Only iOS (iPAD)
 - WiFi connection to MD4 modules

Tablet features - System status



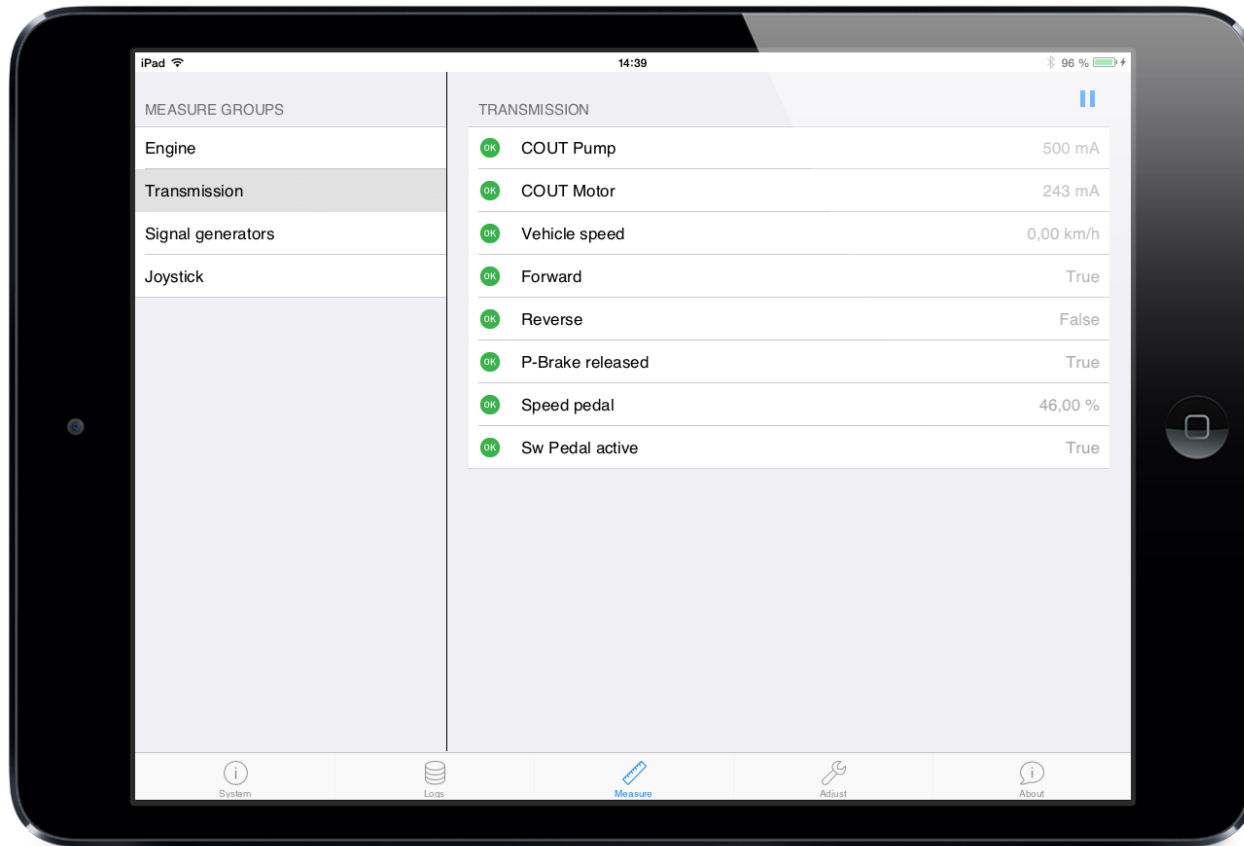
- Here you quickly find module or I/O related alarms or errors. You will also find settings such as date/time and language, and module information such as serial number, software version and more.

Tablet features - Logs



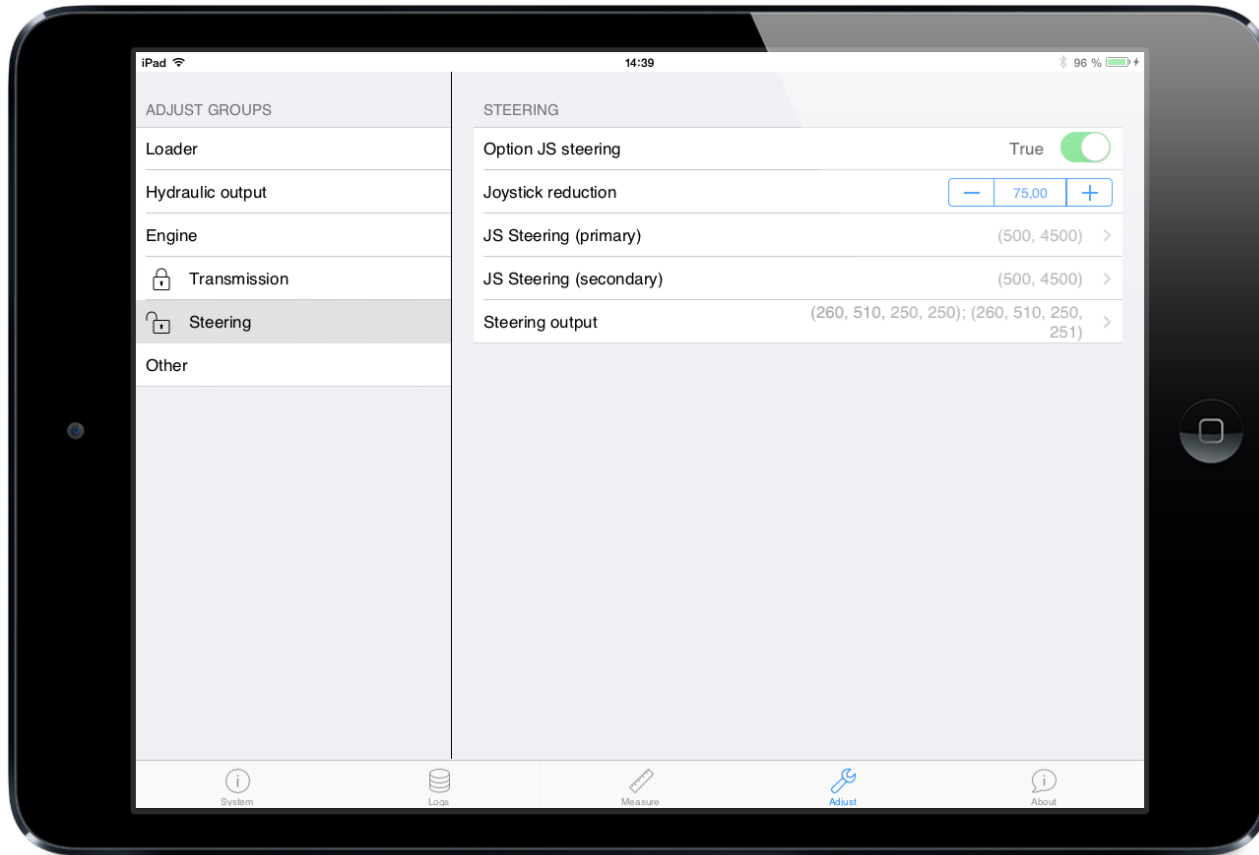
- View all logs and their content. There is a filter function that lets you find what you're looking for fast and easy. And you can erase the content of a log when needed.

Tablet features - Measure



- This is a powerful tool when you need to do a more detailed trouble shooting, or just want to view the value on a certain input, output or internal channel. All measured values are presented together with their unit and status.

Tablet features - Adjust



- IQANrun has functions for adjusting inputs, outputs and parameters. It is also possible to reset a setting to its factory default value if needed.

Testing the IQANrun 3 free app with IQAN-MD4 and WIFI interface

- Standard M12 to RJ45 cable 20077780
- ASUS WIFI dongle WL-300NUL
- IQANdesign 3.14 or higher.
 - Security property – Allow IQANrun for tablets. Default value is Yes.



Property Inspector - Security	
Property	Value
Name	Security
Description	
<input checked="" type="checkbox"/> Access levels	{Allow all
Allow IQANrun for tablets	Yes

Future version

- IQANrun 3 Free for Android Tablets
- IQANrun 3 Pro for Android and iOS Tablets
- IQANrun 3 for Android and iOS smart phones

Future features

IQANrun 3 Pro features

- Graph measure
- Settings viewer
- Update SW
- Save logs
- and more...



IQANrun 3 Smart Phone version

- Get logs
- Update SW
- and more...

